

SOAL SOAL PREDIKSI TKA SMP 2025-20256

MATEMATIKA

Pilih jawaban yang paling benar

1. Hasil dari $-6 + (6 : (-2)) - ((-3) \times 3)$ adalah ...

- A. 0
- B. 3
- C. 6
- D. 9

2. Tali yang panjangnya 10 meter akan dipotong menjadi beberapa bagian yang sama panjang. Jika tiap bagian panjangnya $\frac{1}{4}$ meter, maka banyak potongan tali yang terjadi adalah

- A. 30
- B. 35
- C. 40
- D. 45

3. Untuk membuat 20 roti diperlukan 4 kg tepung terigu. Banyaknya tepung terigu yang diperlukan untuk membuat 50 roti tersebut adalah

- A. 8 kg
- B. 10 kg
- C. 12 kg
- D. 14 kg

We and our 41 IAB TCF partners store and access information on your device for the following purposes: store and/or access information on a device, advertising and content measurement, audience research, and services development, personalised advertising, and personalised content. ✕

Personal data may be processed to do the following: use precise geolocation data and actively scan device characteristics for identification.

Our third party IAB TCF partners may store and access information on your device such as IP address and device characteristics. Our IAB TCF Partners may process this personal data on the basis of legitimate interest, or with your consent. You may change or withdraw your preferences for this website at any time by clicking on the cookie icon or link; however, as a consequence, you may not see relevant ads or personalized content. You may change your settings at any time or accept the default settings. You may close this banner to continue with only essential cookies. [Privacy Policy](#)

[Storage Preferences](#)

[Third Parties](#)

Storage

Targeted Advertising

Personalization

Analytics

Save preferences

Accept All

Reject Non-Essential

6. Hasil dari 10^{-2} adalah

- A. -100
- B. -20
- C. 0,2
- D. 0,01

7. Andi menabung uang sebesar Rp 800.000,00 di Bank dengan bunga 6% per tahun. Jumlah tabungan Andi setelah 9 bulan adalah

- A. Rp 836.000,00
- B. Rp 840.000,00
- C. Rp 848.000,00
- D. Rp 854.000,00

8. Dua suku berikutnya dari barisan bilangan 50, 45, 39, 32, ... adalah ..

- A. 24, 15
- B. 24, 16
- C. 25, 17
- D. 25, 18

9. Banyak kursi baris depan pada gedung pertunjukkan 15 buah. Banyak kursi pada baris di belakangnya selalu lebih 4 buah dari kursi pada baris di depannya. Jika dalam gedung ada 20 baris kursi, maka banyak kursi pada baris ke-20 di gedung tersebut adalah ...

- A. 01

We and our 41 IAB TCF partners store and access information on your device for the following purposes: store and/or access information on a device, advertising and content measurement, audience research, and services development, personalised advertising, and personalised content. ✕

Personal data may be processed to do the following: use precise geolocation data and actively scan device characteristics for identification.

Our third party IAB TCF partners may store and access information on your device such as IP address and device characteristics. Our IAB TCF Partners may process this personal data on the basis of legitimate interest, or with your consent. You may change or withdraw your preferences for this website at any time by clicking on the cookie icon or link; however, as a consequence, you may not see relevant ads or personalized content. You may change your settings at any time or accept the default settings. You may close this banner to continue with only essential cookies. [Privacy Policy](#)

[Storage Preferences](#)

[Third Parties](#)

Storage

Targeted Advertising

Personalization

Analytics

Save preferences

Accept All

Reject Non-Essential

11. Faktor dari $x^2 - 25x$ adalah

- A. $5x(x - 25)$
- B. $(x + 5)(x - 5)$
- C. $(x - 5)(x + 5)$
- D. $x(x - 25)$

12. Nilai x yang memenuhi persamaan $3x - 2 = x + 4$ adalah

- A. 6
- B. 3
- C. 2
- D. 1

13. Penyelesaian dari $3x + 10 > 6x - 8$ adalah ...

- A. $x < 2$
- B. $x > 2$
- C. $x < 6$
- D. $x > 6$

14. Dari 143 siswa, 95 siswa senang matematika, 87 siswa senang fisika, dan 60 siswa senang keduanya. Banyak siswa yang tidak senang matematika maupun fisika adalah

- A. 21 orang
- B. 27 orang
- C. 35 orang

We and our 41 IAB TCF partners store and access information on your device for the following purposes: store and/or access information on a device, advertising and content measurement, audience research, and services development, personalised advertising, and personalised content. ✕

Personal data may be processed to do the following: use precise geolocation data and actively scan device characteristics for identification.

Our third party IAB TCF partners may store and access information on your device such as IP address and device characteristics. Our IAB TCF Partners may process this personal data on the basis of legitimate interest, or with your consent. You may change or withdraw your preferences for this website at any time by clicking on the cookie icon or link; however, as a consequence, you may not see relevant ads or personalized content. You may change your settings at any time or accept the default settings. You may close this banner to continue with only essential cookies. [Privacy Policy](#)

[Storage Preferences](#)

[Third Parties](#)

Storage

Targeted Advertising

Personalization

Analytics

Save preferences

Accept All

Reject Non-Essential

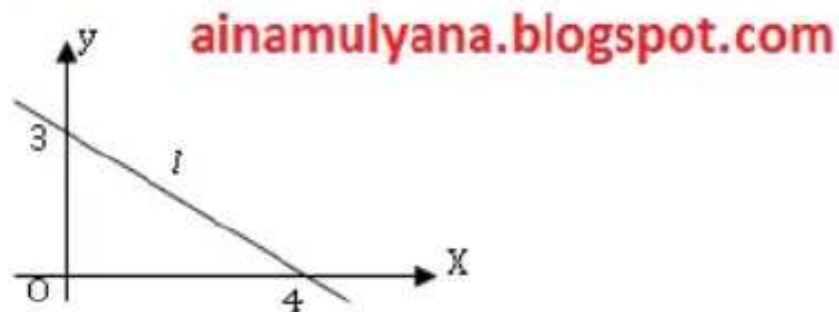
16. Diketahui suatu fungsi $f(x) = 2x - 3$. Nilai $f(-1)$ adalah

- A. 5
- B. 1
- C. -1
- D. -5

17. Diketahui $f(x) = 8 - 2x$, jika $f(a) = -2$, maka nilai a adalah ..

- A. -5
- B. -3
- C. 3
- D. 5

18. Perhatikan grafik berikut :



Gradien garis l adalah

- A. $-\frac{4}{3}$
- B. $-\frac{3}{4}$
- C. $\frac{3}{4}$
- D. $\frac{4}{3}$

We and our 41 IAB TCF partners store and access information on your device for the following purposes: store and/or access information on a device, advertising and content measurement, audience research, and services development, personalised advertising, and personalised content. ✕

Personal data may be processed to do the following: use precise geolocation data and actively scan device characteristics for identification.

Our third party IAB TCF partners may store and access information on your device such as IP address and device characteristics. Our IAB TCF Partners may process this personal data on the basis of legitimate interest, or with your consent. You may change or withdraw your preferences for this website at any time by clicking on the cookie icon or link; however, as a consequence, you may not see relevant ads or personalized content. You may change your settings at any time or accept the default settings. You may close this banner to continue with only essential cookies. [Privacy Policy](#)

[Storage Preferences](#)

[Third Parties](#)

Storage

Targeted Advertising

Personalization

Analytics

Save preferences

Accept All

Reject Non-Essential

21. Harga 1 pulpen dan 2 buku Rp10.000,00 sedangkan harga 2 pulpen dan 1 buku Rp11.000,00. Harga 1 pulpen adalah

- A. Rp2.000,00
- B. Rp3.000,00
- C. Rp3.500,00
- D. Rp4.000,00

22. Diantara pasangan bilangan berikut:

- (1) 13, 12, 5 (3) 7, 24, 25
(2) 6, 8, 11 (4) 20, 12, 15

Yang merupakan tripel pythagoras adalah

- A. (1) dan (2)
- B. (1) dan (3)
- C. (2) dan (3)
- D. (2) dan (4)

20. Penyelesaian sistem persamaan $x + y = 7$ dan $x - y = 3$ adalah

- A. (2,5)
- B. (5,2)
- C. (-3,10)
- D. (4, 0)

We and our 41 IAB TCF partners store and access information on your device for the following purposes: store and/or access information on a device, advertising and content measurement, audience research, and services development, personalised advertising, and personalised content. ✕

Personal data may be processed to do the following: use precise geolocation data and actively scan device characteristics for identification.

Our third party IAB TCF partners may store and access information on your device such as IP address and device characteristics. Our IAB TCF Partners may process this personal data on the basis of legitimate interest, or with your consent. You may change or withdraw your preferences for this website at any time by clicking on the cookie icon or link; however, as a consequence, you may not see relevant ads or personalized content. You may change your settings at any time or accept the default settings. You may close this banner to continue with only essential cookies. [Privacy Policy](#)

[Storage Preferences](#)

[Third Parties](#)

- Storage
- Targeted Advertising
- Personalization
- Analytics

Save preferences

Accept All

Reject Non-Essential

21. Harga 1 pulpen dan 2 buku Rp10.000,00 sedangkan harga 2 pulpen dan 1 buku Rp11.000,00. Harga 1 pulpen adalah

- A. Rp2.000,00
- B. Rp3.000,00
- C. Rp3.500,00
- D. Rp4.000,00

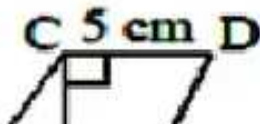
22. Diantara pasangan bilangan berikut:

- (1) 13, 12, 5 (3) 7, 24, 25
- (2) 6, 8, 11 (4) 20, 12, 15

Yang merupakan tripel pythagoras adalah

- A. (1) dan (2)
- B. (1) dan (3)
- C. (2) dan (3)
- D. (2) dan (4)

23. Perhatikan gambar di bawah ini



We and our 41 IAB TCF partners store and access information on your device for the following purposes: store and/or access information on a device, advertising and content measurement, audience research, and services development, personalised advertising, and personalised content. ✕

Personal data may be processed to do the following: use precise geolocation data and actively scan device characteristics for identification.

Our third party IAB TCF partners may store and access information on your device such as IP address and device characteristics. Our IAB TCF Partners may process this personal data on the basis of legitimate interest, or with your consent. You may change or withdraw your preferences for this website at any time by clicking on the cookie icon or link; however, as a consequence, you may not see relevant ads or personalized content. You may change your settings at any time or accept the default settings. You may close this banner to continue with only essential cookies. [Privacy Policy](#)

[Storage Preferences](#)

[Third Parties](#)

- Storage
- Targeted Advertising
- Personalization
- Analytics

Save preferences

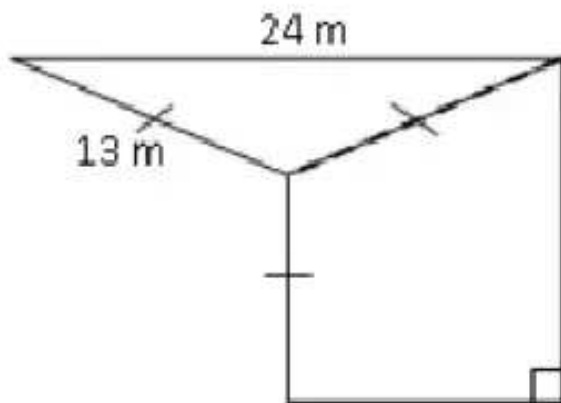
Accept All

Reject Non-Essential

24. Kebun berbentuk belah ketupat, panjang kedua diagonalnya 24 m dan 18 m. Di sekelilingnya ditanami pohon dengan jarak antar pohon 3 m. Banyaknya pohon adalah ...

- A. 14
- B. 15
- C. 20
- D. 28

25. Perhatikan denah kebun Pak Amin berikut !



Luas kebun Pak Amin adalah ...

- A. 186 m^2
- B. 216 m^2
- C. 246 m^2
- D. 306 m^2

We and our 41 IAB TCF partners store and access information on your device for the following purposes: store and/or access information on a device, advertising and content measurement, audience research, and services development, personalised advertising, and personalised content. ✕

Personal data may be processed to do the following: use precise geolocation data and actively scan device characteristics for identification.

Our third party IAB TCF partners may store and access information on your device such as IP address and device characteristics. Our IAB TCF Partners may process this personal data on the basis of legitimate interest, or with your consent. You may change or withdraw your preferences for this website at any time by clicking on the cookie icon or link; however, as a consequence, you may not see relevant ads or personalized content. You may change your settings at any time or accept the default settings. You may close this banner to continue with only essential cookies. [Privacy Policy](#)

[Storage Preferences](#)

[Third Parties](#)

Storage

Targeted Advertising

Personalization

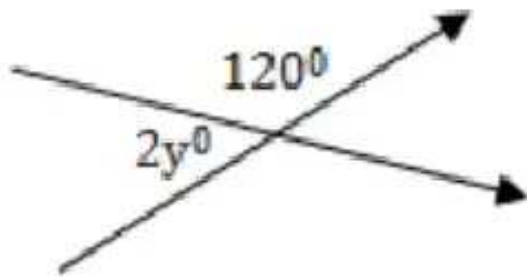
Analytics

Save preferences

Accept All

Reject Non-Essential

26. Perhatikan gambar !



Nilai y pada gambar di atas adalah ...

- A. 20°
- B. 30°
- C. 40°
- D. 60°

27. Perhatikan gambar!

Segitiga ABC kongruen dengan segitiga PTO. Pasangan sudut yang sama besar adalah...

- A. $\angle BAC = \angle POT$
- B. $\angle BAC = \angle PTO$
- C. $\angle ABC = \angle POT$
- D. $\angle ABC = \angle PTO$

28. Perhatikan gambar berikut !

We and our 41 IAB TCF partners store and access information on your device for the following purposes: store and/or access information on a device, advertising and content measurement, audience research, and services development, personalised advertising, and personalised content. ✕

Personal data may be processed to do the following: use precise geolocation data and actively scan device characteristics for identification.

Our third party IAB TCF partners may store and access information on your device such as IP address and device characteristics. Our IAB TCF Partners may process this personal data on the basis of legitimate interest, or with your consent. You may change or withdraw your preferences for this website at any time by clicking on the cookie icon or link; however, as a consequence, you may not see relevant ads or personalized content. You may change your settings at any time or accept the default settings. You may close this banner to continue with only essential cookies. [Privacy Policy](#)

[Storage Preferences](#)

[Third Parties](#)

Storage

Targeted Advertising

Personalization

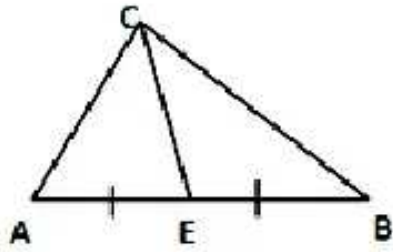
Analytics

Save preferences

Accept All

Reject Non-Essential

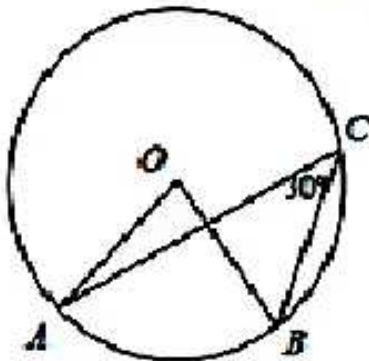
29. Perhatikan gambar berikut !



Garis CE adalah....

- A. garis tinggi
- B. garis bagi
- C. garis sumbu
- D. garis berat

30. Perhatikan gambar berikut ini!



Diketahui O adalah titik pusat lingkaran. Besar sudut AOB adalah

- A. 15°
- B. 30°
- C. 15°

We and our 41 IAB TCF partners store and access information on your device for the following purposes: store and/or access information on a device, advertising and content measurement, audience research, and services development, personalised advertising, and personalised content. ✕

Personal data may be processed to do the following: use precise geolocation data and actively scan device characteristics for identification.

Our third party IAB TCF partners may store and access information on your device such as IP address and device characteristics. Our IAB TCF Partners may process this personal data on the basis of legitimate interest, or with your consent. You may change or withdraw your preferences for this website at any time by clicking on the cookie icon or link; however, as a consequence, you may not see relevant ads or personalized content. You may change your settings at any time or accept the default settings. You may close this banner to continue with only essential cookies. [Privacy Policy](#)

[Storage Preferences](#)

[Third Parties](#)

Storage

Targeted Advertising

Personalization

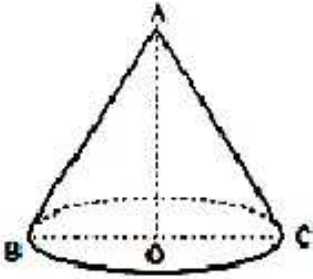
Analytics

Save preferences

Accept All

Reject Non-Essential

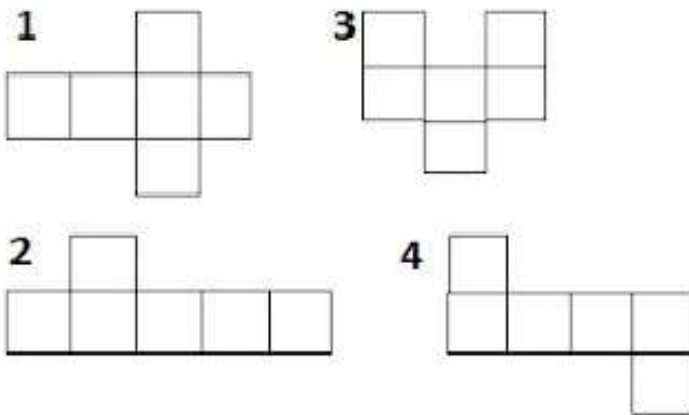
32. Perhatikan gambar kerucut berikut !



Garis AB adalah

- A. Jari-jari
- B. Garis pelukis
- C. Garis tinggi
- D. Diameter

33. Perhatikan gambar berikut !



Diantara rangkaian persegi di samping yang merupakan jaring-jaring kubus adalah....

We and our 41 IAB TCF partners store and access information on your device for the following purposes: store and/or access information on a device, advertising and content measurement, audience research, and services development, personalised advertising, and personalised content. ✕

Personal data may be processed to do the following: use precise geolocation data and actively scan device characteristics for identification.

Our third party IAB TCF partners may store and access information on your device such as IP address and device characteristics. Our IAB TCF Partners may process this personal data on the basis of legitimate interest, or with your consent. You may change or withdraw your preferences for this website at any time by clicking on the cookie icon or link; however, as a consequence, you may not see relevant ads or personalized content. You may change your settings at any time or accept the default settings. You may close this banner to continue with only essential cookies. [Privacy Policy](#)

[Storage Preferences](#)

[Third Parties](#)

Storage

Targeted Advertising

Personalization

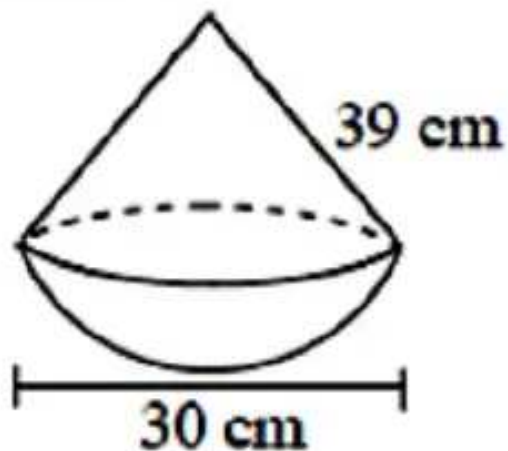
Analytics

Save preferences

Accept All

Reject Non-Essential

34. Perhatikan gambar bandul yang dibentuk oleh kerucut dan belahan bola berikut !



Luas permukaan bandul tersebut adalah

- A. 3.249,9 cm²
- B. 2.675 cm²
- C. 1.260 cm²
- D. 1.035 cm²

35. Sebuah kaleng berbentuk tabung berdiameter 28 cm dan tinggi 60 cm penuh berisi minyak. Minyak tersebut akan dituangkan ke dalam kaleng-kaleng kecil berdiameter 14 cm dan tinggi 20 cm. Banyaknya kalengkecil yang diperlukan untuk menampung seluruh minyak dari kaleng besar adalah

- A. 8 buah
- B. 12 buah
- C. 16 buah
- D. 32 buah

36. Median dari data pada tabel di bawah adalah

We and our 41 IAB TCF partners store and access information on your device for the following purposes: store and/or access information on a device, advertising and content measurement, audience research, and services development, personalised advertising, and personalised content. ✕

Personal data may be processed to do the following: use precise geolocation data and actively scan device characteristics for identification.

Our third party IAB TCF partners may store and access information on your device such as IP address and device characteristics. Our IAB TCF Partners may process this personal data on the basis of legitimate interest, or with your consent. You may change or withdraw your preferences for this website at any time by clicking on the cookie icon or link; however, as a consequence, you may not see relevant ads or personalized content. You may change your settings at any time or accept the default settings. You may close this banner to continue with only essential cookies. [Privacy Policy](#)

[Storage Preferences](#)

[Third Parties](#)

Storage

Targeted Advertising

Personalization

Analytics

Save preferences

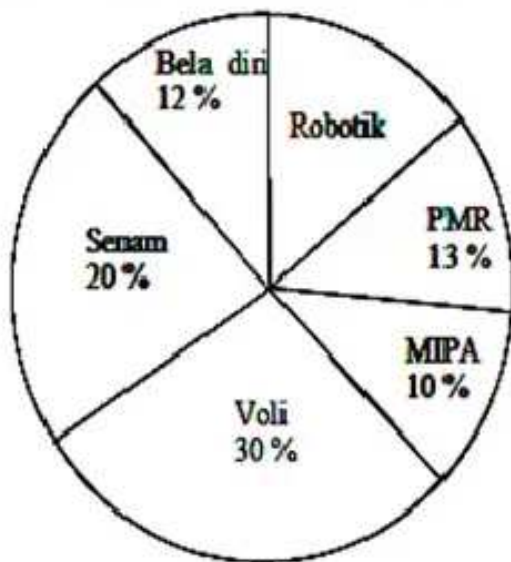
Accept All

Reject Non-Essential

37. Nilai rata-rata tes Matematika 15 siswa adalah 6,6. Bila nilai Andi disertakan, maka nilai rata-ratanya menjadi 6,7. Nilai Andi dalam tes matematika tersebut adalah ...

- A. 7,5
- B. 7,8
- C. 8,2
- D. 8,4

38. Diagram lingkaran berikut menunjukkan kegemaran 200 siswa dalam mengikuti kegiatan ekstrakurikuler di suatu sekolah.



Banyak siswa yang gemar robotik adalah ...

- A. 10 orang
- B. 15 orang
- C. 25 orang
- D. 30 orang

We and our 41 IAB TCF partners store and access information on your device for the following purposes: store and/or access information on a device, advertising and content measurement, audience research, and services development, personalised advertising, and personalised content. ✕

Personal data may be processed to do the following: use precise geolocation data and actively scan device characteristics for identification.

Our third party IAB TCF partners may store and access information on your device such as IP address and device characteristics. Our IAB TCF Partners may process this personal data on the basis of legitimate interest, or with your consent. You may change or withdraw your preferences for this website at any time by clicking on the cookie icon or link; however, as a consequence, you may not see relevant ads or personalized content. You may change your settings at any time or accept the default settings. You may close this banner to continue with only essential cookies. [Privacy Policy](#)

[Storage Preferences](#)

[Third Parties](#)

Storage

Targeted Advertising

Personalization

Analytics

Save preferences

Accept All

Reject Non-Essential